

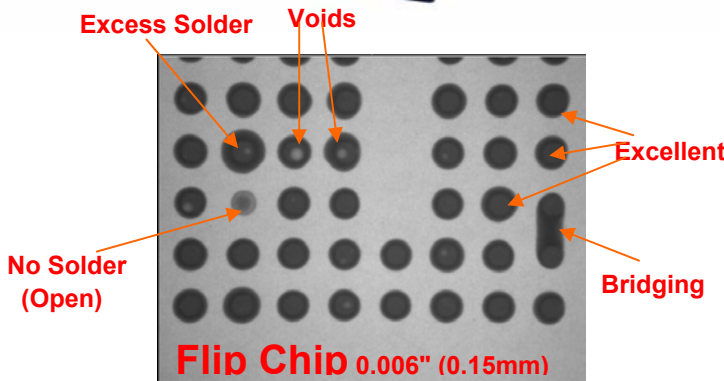
Xray Inspection System



**Powerful Performance at Competitive Pricing!
Complies with all US and International Safety Standards, Meets or exceed CDRH directives**

Powerful software for 3D simulations, void percentage calculations and defect analysis.

**Motorized XY board positioning
Large inspection area with 3D actuator. With X-ray energy at 100KV and focal spot size at 5 micron (typ) it gives you the added capability to inspect flip chip**



Larger rotating table for 3D view

Machine Specification Model: View X L-1000

Machine External Dim.	Lg 1200 x W1000mm x Ht 1300 mm
X-Ray Energy	100 KV
Power	10 watts
Focal Spot Size	5 microns typ.
X-Ray Tube Style	Sealed tube
Image Detector	4/2" Dual field Image Intensifier
Camera	CCD with Zoom Lens.
Image Processor	View X1000 High end image processing workstation
Field of View	Variable up to 2"
Max. Inspection Area	480mm x 500mm.
Magnifications	125x Geometric, up to 600x optical zoom
X-Y position	Motorized via joy stick with fast/slow controls. with LED pointer to indicate x-rayed position.
Options	3D tilt platform for 3D view
Facilities.	220VAC or 110VAC single phase - to specify on order.